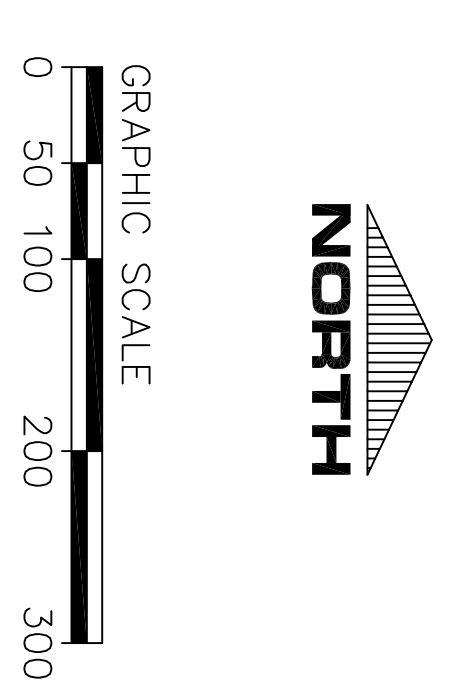
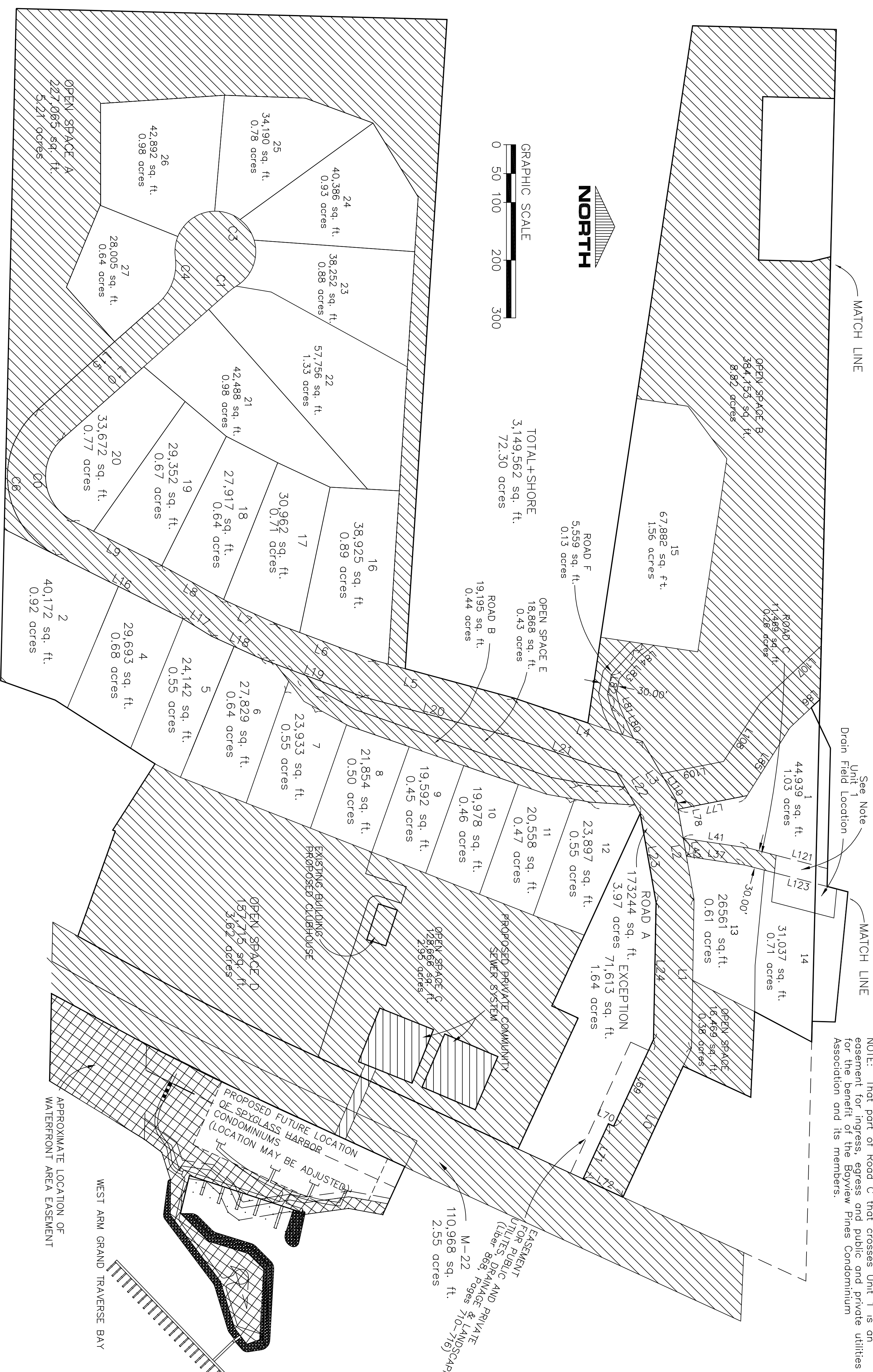


LINE TABLE

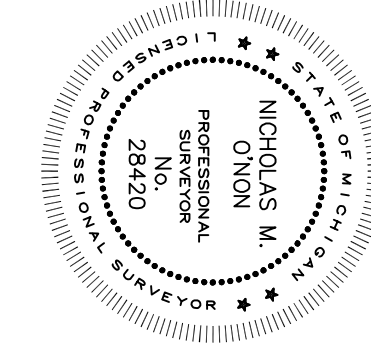
LINE	LENGTH	BEARING
L0	284.08	N65°18'22"W
L9	171.59	S26°38'26"W
L10	383.93	N41°28'57"W
L11	38.37	N56°01'06"W
L12	38.37	S56°01'06"E
L13	50.00	S71°19'23"E
L14	25.29	S57°40'42"E
L15	267.42	S41°28'57"E
L16	245.59	N26°38'26"E
L17	57.57	N31°29'21"E
L18	95.73	N24°25'35"E
L19	186.88	N20°29'59"E
L20	250.28	N15°04'33"E
L21	209.04	N18°37'14"E
L22	81.17	N60°06'05"E
L1	257.81	N89°01'42"W
L23	156.24	N80°00'02"E
L24	237.54	S89°01'42"E
L2	174.05	S80°00'02"W
L32	468.42	N19°31'55"E
L33	40.37	N07°53'07"E
L37	102.29	N08°36'56"E
L38	126.37	N14°34'05"E
L3	117.78	S60°06'05"W
L39	30.81	N88°36'46"E
L40	120.90	S14°34'05"W
L41	113.95	S08°36'56"W
L42	31.71	S07°01'49"W
L43	50.85	S00°53'42"E
L4	236.07	S18°37'14"W
L5	249.20	S15°04'33"W
L6	181.49	S20°29'59"W
L7	93.47	S24°25'35"W
L8	128.90	S28°49'33"W
L53	26.95	N52°52'39"E
L54	78.53	N28°38'49"E
L55	358.39	N19°05'15"E
L56	72.93	N10°14'12"E
L57	56.42	N03°48'57"E
L58	36.07	N60°06'05"E
L59	78.12	S03°48'57"W
L60	76.93	S10°14'12"W
L61	363.22	S19°05'15"W
L62	87.48	S28°38'49"W
L63	80.70	S52°52'39"W
L64	56.02	N20°29'59"E
L65	186.88	S20°29'59"W
L66	250.28	S15°04'33"W
L67	209.04	S18°37'14"W
L68	81.17	S60°06'05"W
L69	165.26	S65°18'22"E
L70	100.00	S24°39'39"W
L71	105.00	S65°18'22"E
L72	76.00	N24°39'39"E
L76	238.17	S57°46'41"E
L77	121.65	S11°04'56"E
L78	15.00	S80°00'02"W
L80	46.99	S66°33'14"W
L81	28.15	S75°05'14"W
L82	33.88	N78°50'56"W
L83	56.83	N47°56'09"W
L84	19.43	N38°11'32"W



CURVE TABLE

CURVE	LENGTH	RADIUS	DELTA	CHORD DIR	CHORD DIST
C0	169.88	87.00	111°52'37"	N82°34'44"E	144.15
C1	16.31	90.00	10°23'04"	S36°17'25"E	16.29
C3	301.46	70.00	246°45'03"	S25°31'35"W	116.91
C4	88.54	90.00	56°21'59"	N69°39'57"W	85.01
C5	17.00	67.00	14°32'08"	N48°45'01"W	16.95
C6	298.75	153.00	111°52'37"	N82°34'44"E	253.50
C7	28.46	70.00	23°17'35"	N07°53'07"E	28.26
C8	28.46	70.00	23°17'35"	N07°53'07"E	28.26

ALL IMPROVEMENTS NEED NOT BE BUILT.



NICHOLAS M. ONON
PROFESSIONAL SURVEYOR NO. 28420
105 BROADWAY
SUTTONS BAY, MICHIGAN 49682

BAYVIEW PINES

Revised NOVEMBER 21, 2008 FILE NO.: 200121-21B2911

SITE PLAN 1	Sheet No. 2
Proposed NOVEMBER 21, 2005	Drwnn: DKE
Onon Land Surveying	Approved: NMO
105 BROADWAY	
SUTTONS BAY, MICHIGAN 49682	

NOTE: That part of Road C that crosses Unit 1 is on easement for ingress, egress and public and private utilities for the benefit of the Bayview Pines Condominium Association and its members.

PROPOSED FUTURE LOCATION OF SP/GLASS HARBOR CONDOMINIUMS (LOCATION MAY BE ADJUSTED)

EXISTING BUILDING PROPOSED CLUBHOUSE

PROPOSED PRIVATE COMMUNITY SEWER SYSTEM

OPEN SPACE C 128,666 sq. ft. 2.95 acres

OPEN SPACE D 157,715 sq. ft. 3.62 acres

APPROXIMATE LOCATION OF WATERFRONT AREA EASEMENT

WEST ARM GRAND TRAVERSE BAY

EASEMENT FOR PUBLIC UTILITIES DRAINAGE & AND SCOURING (uber 888 Pages 710-716)

M-22 110,968 sq. ft. 2.55 acres