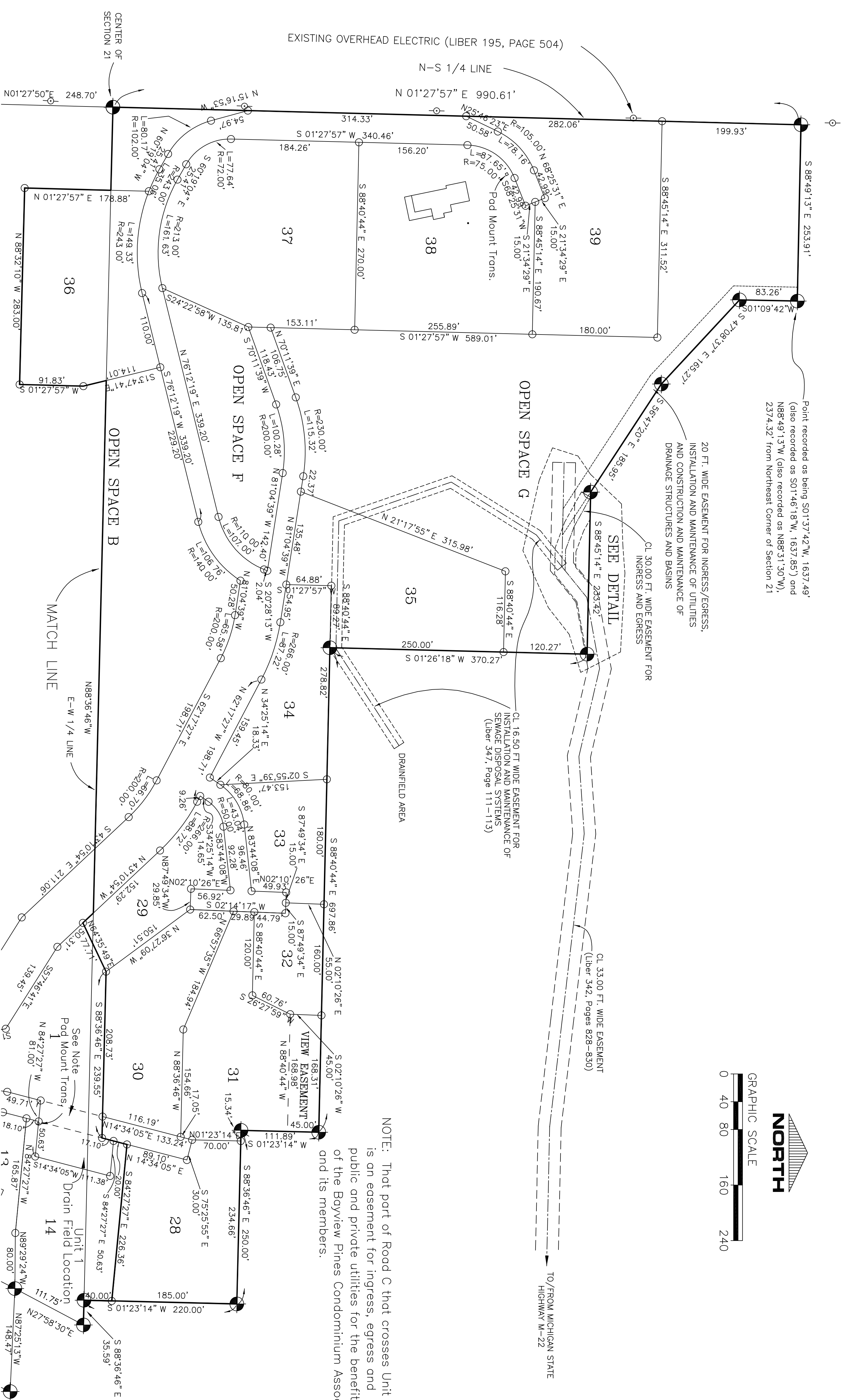


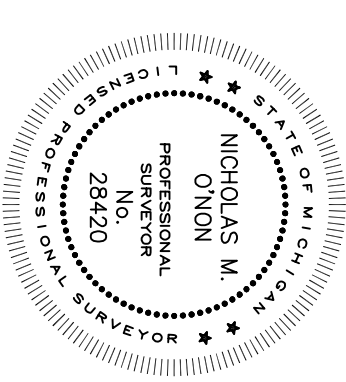
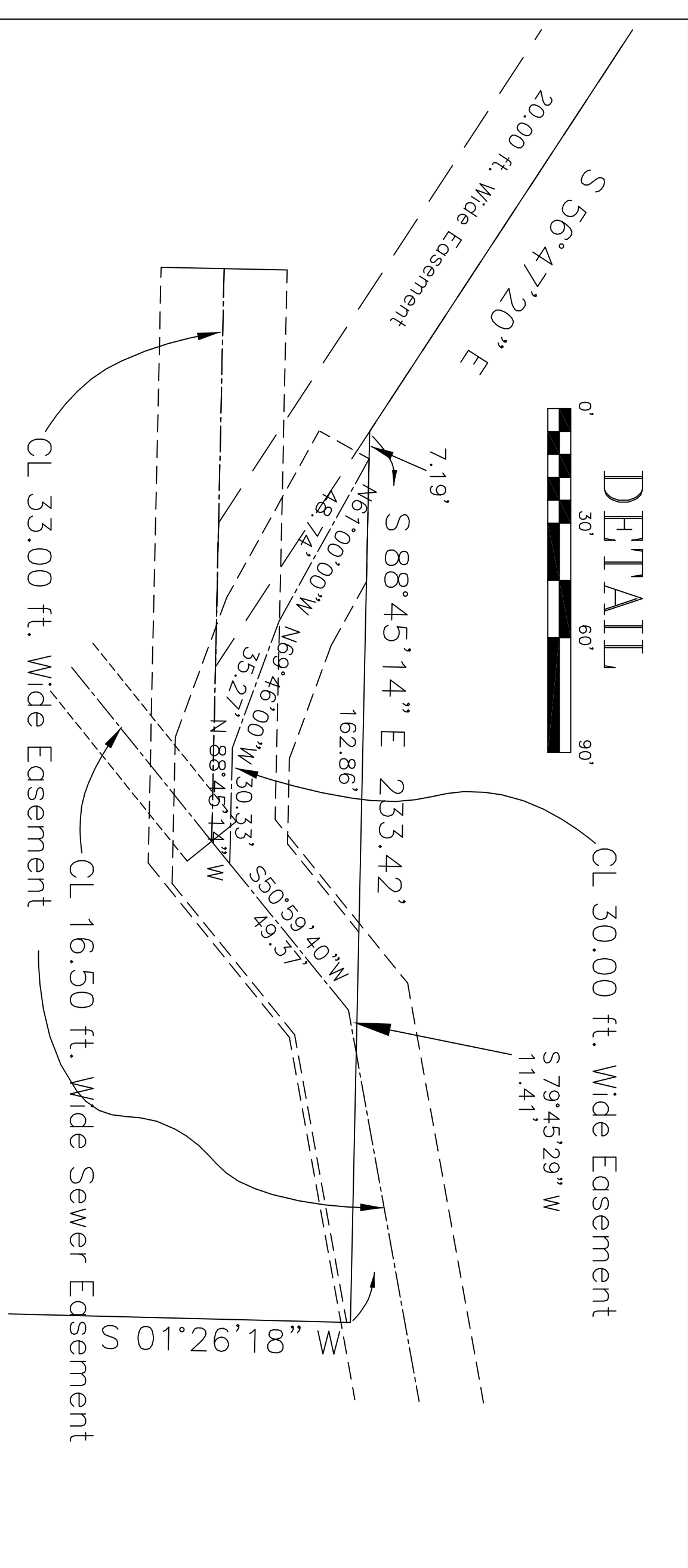
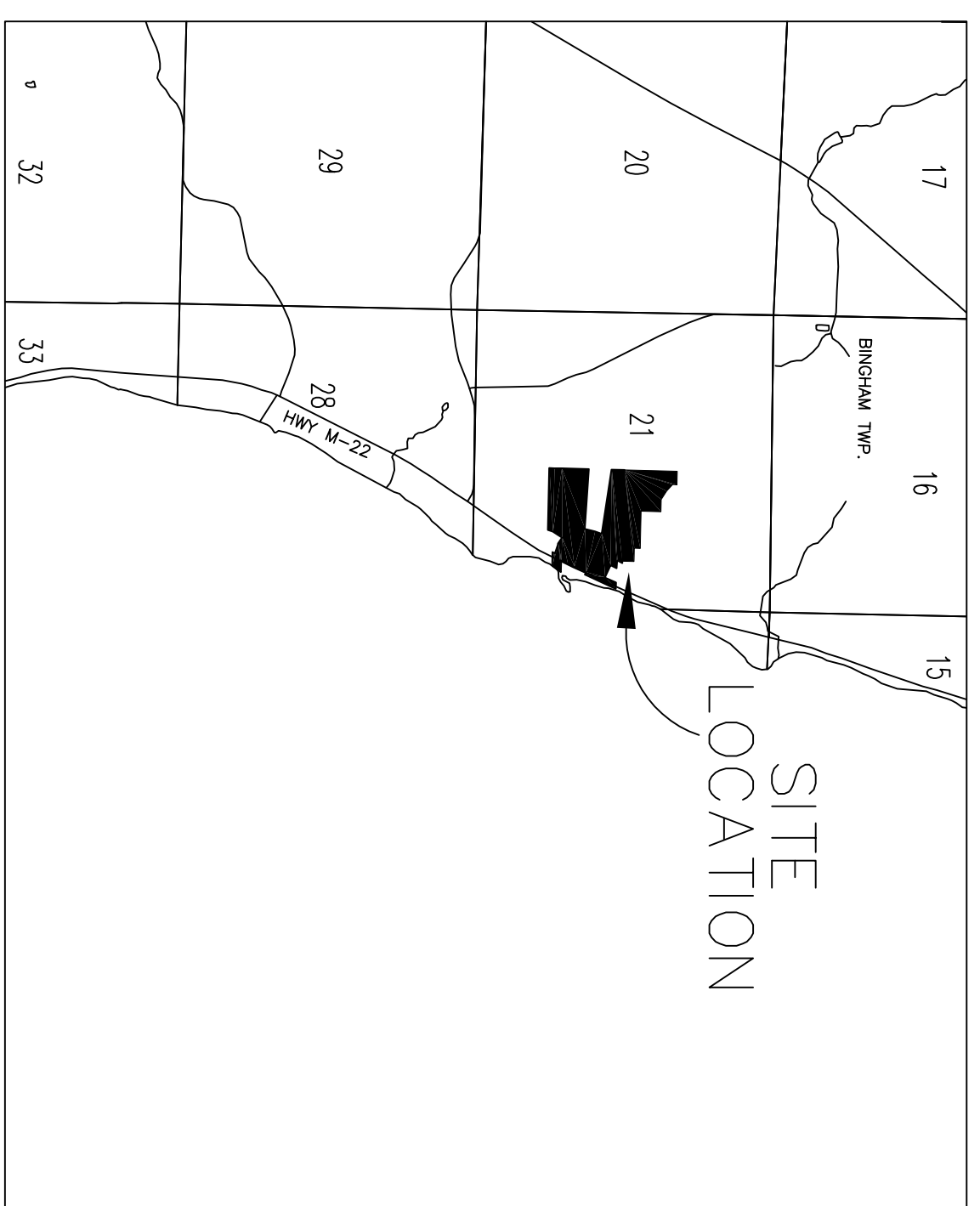
GRAPHIC SCALE



Point recorded as being S01°37'42"W, 1637.49'
(also recorded as S01°46'18"W, 1637.85') and
N88°49'13"W (also recorded as N88°31'30"W,
2374.32' from Northeast Corner of Section 21



NOTE: That part of Road C that crosses Unit 1 is an easement for ingress, egress and public and private utilities for the benefit of the Bayview Pines Condominium Association and its members.



NICHOLAS M. O'NON
PROFESSIONAL SURVEYOR NO. 28420
105 BROADWAY
SUTTONS BAY, MICHIGAN 49682

BAYVIEW PINES

Revised	NOVEMBER 21, 2008	FILE NO:	200121-21B2911
SURVEY AND UTILITY PLAN 3			
Proposed	OCTOBER 20, 2008	Sheet	8
O'non Land Surveying			
105 BROADWAY			
SUTTONS BAY, MICHIGAN 49682			
Drawn:	KMS	Approved:	NMO