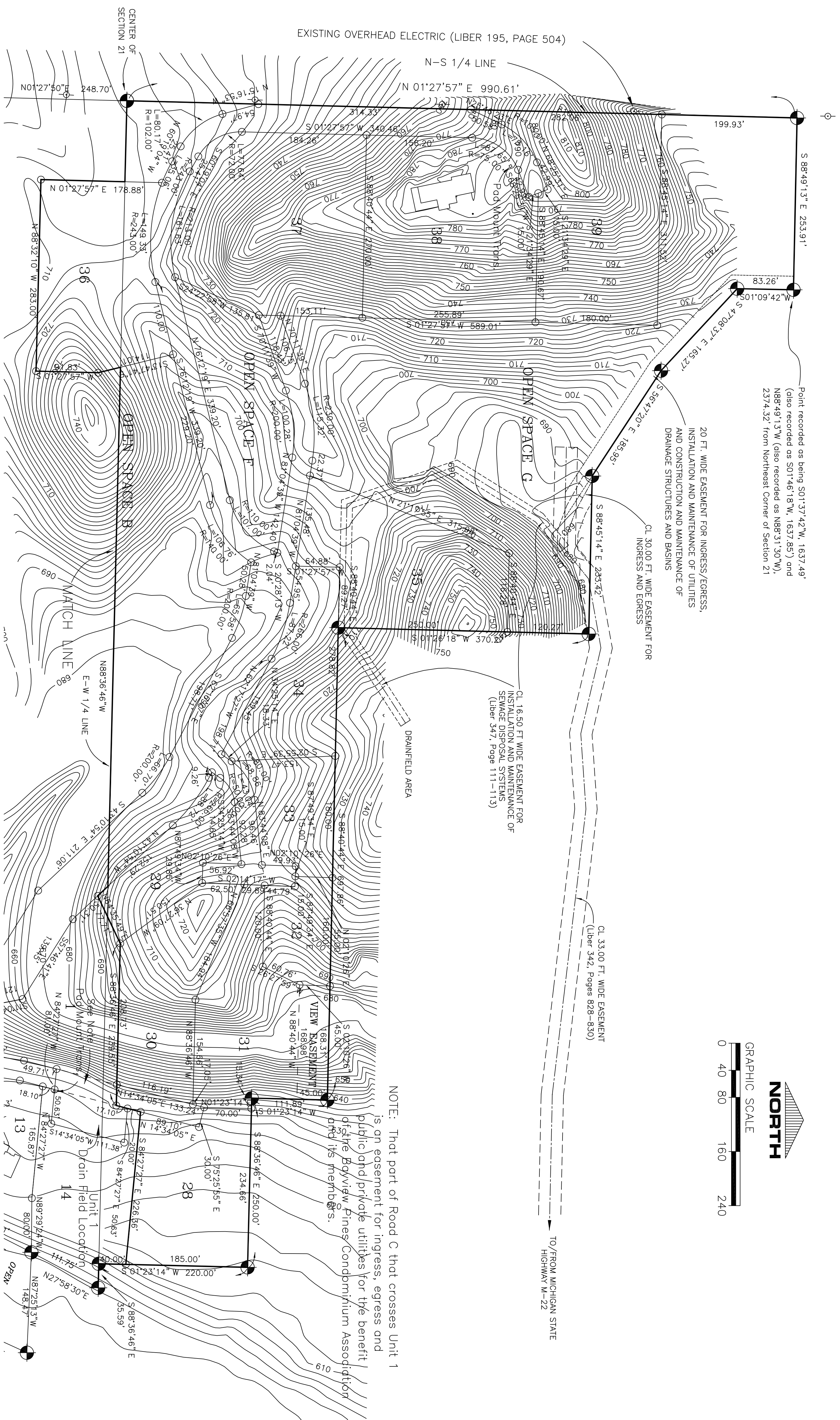
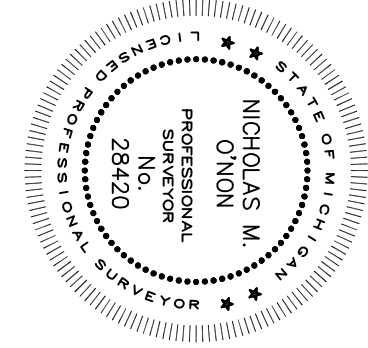
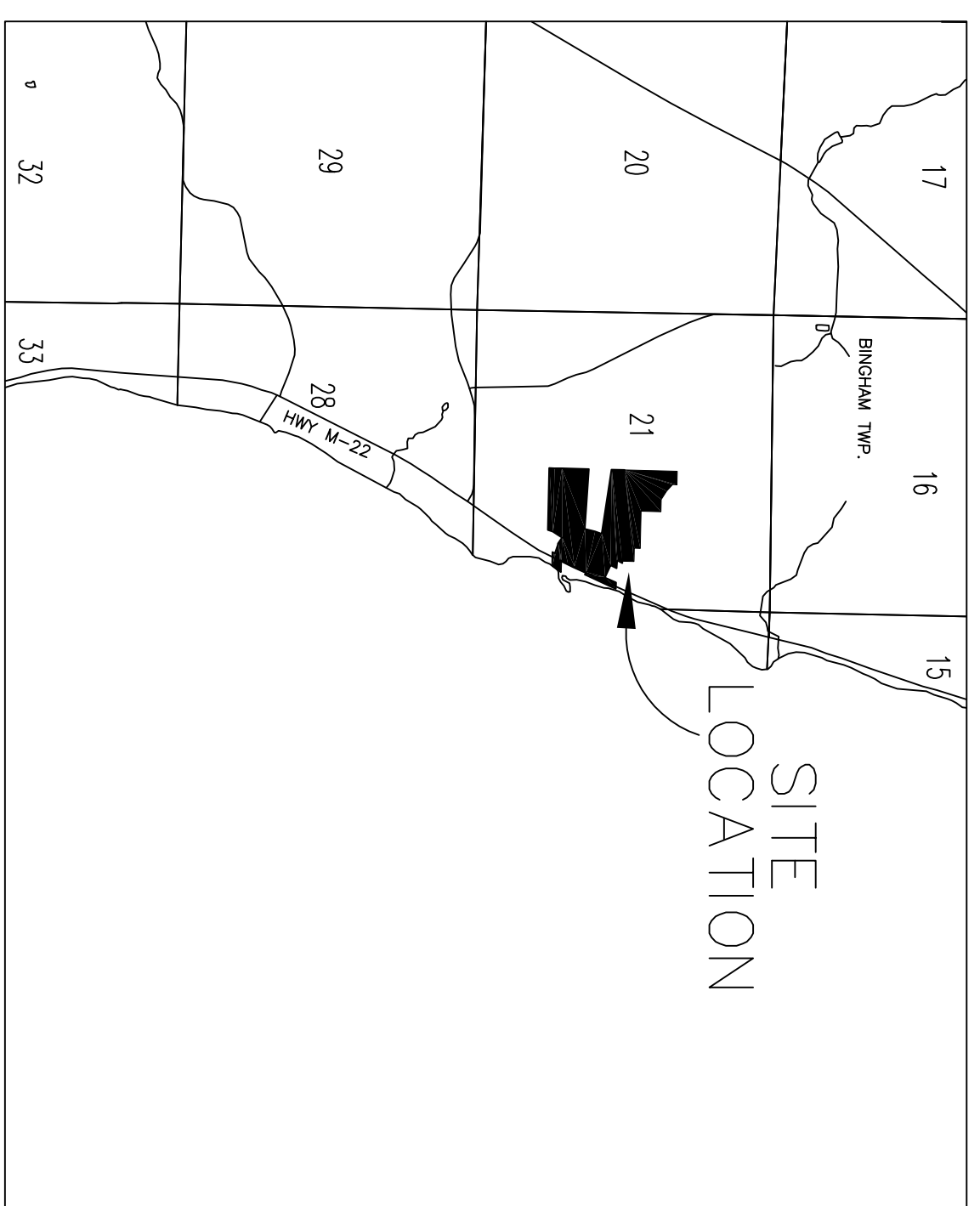


Point recorded as being S01°37'42"W, 1637.49'  
 (also recorded as S01°46'18"W, 1637.85') and  
 N88°49'13"W (also recorded as N88°31'30"W) and  
 2374.32' from Northeast Corner of Section 21



NOTE: That part of Road C that crosses Unit 1 is on easement for ingress, egress and public and private utilities for the benefit of the Bayview Pines Condominium Association and its members.



NICHOLAS M. O'NON  
 PROFESSIONAL SURVEYOR NO. 28420  
 ONON LAND SURVEYING  
 105 BROADWAY  
 SUTTONS BAY, MICHIGAN 49682

SURVEYOR

BAYVIEW PINES

Revised	NOVEMBER 21, 2008	FILE NO:	200121-21B2911
TOPOGRAPHIC DETAIL			
Proposed	OCTOBER 20, 2008	Sheet	9
Onon Land Surveying			
105 BROADWAY			
SUTTONS BAY, MICHIGAN 49682			
Drawn:	KMS	Approved:	NMO